



1

Common vision

In 2050:

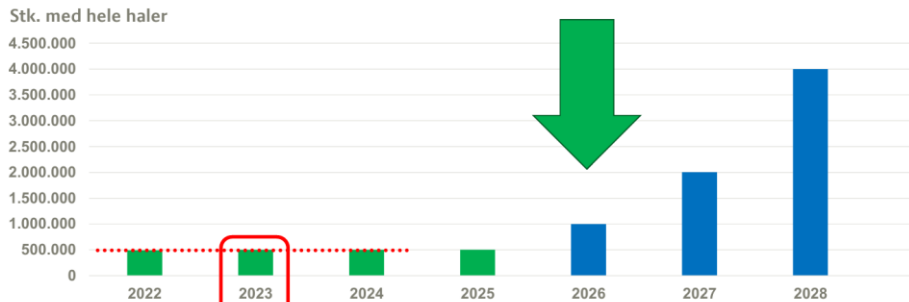
- sows will roam freely in all sections
- we will produce pigs with long tails
- castration will no longer be practiced.

L&F sector for pigs, Danish pig producers, Danish pig slaughterhouses



Foto: Svineproduktion.dk

2



Goal: 4 million pigs with long tails by 2028

3

This will be achieved through redistribution.



Kilde: Seges

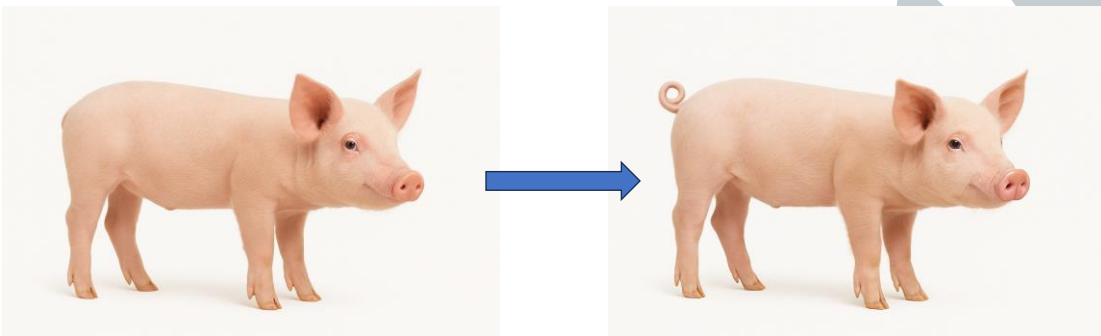
- Pig producers will be charged a fee per pig at slaughter or export.
- The fee goes into a pool.
- Pig producers who participate in the program will receive their compensation from the pool.

4



5

So how do we go from short to long?



6



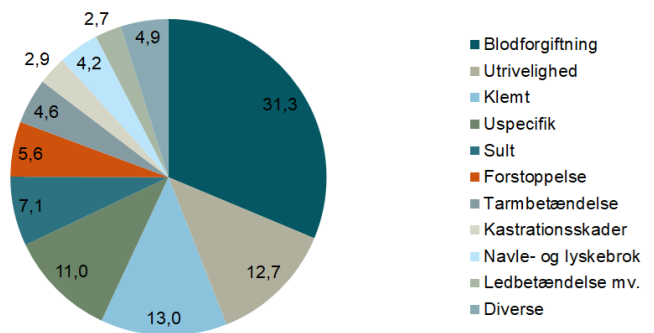
7

PORCUS

What are the benefits of stopping tail docking?

- The pig keeps its tail
- Time
- Fewer documentation requirements
- Less risk of infection
- Greater job satisfaction
- License to produce

Dødsårsag 5.-20. levedøgn (%)



8

But how do we avoid this?



9

- We need to manage what stresses the pigs.
- We need to spot early signs of tail biting.

10

Why do pigs bite tails?

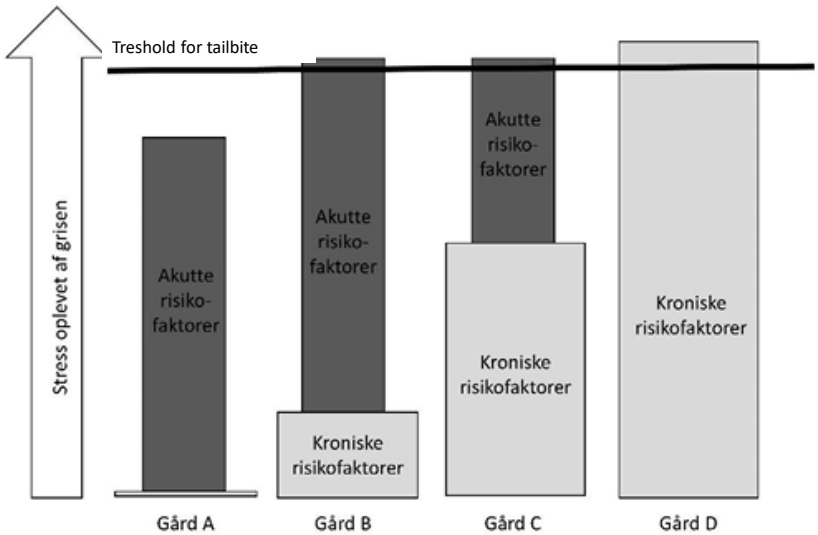
It is typically individual problem pigs that react by biting tails if their stress threshold is exceeded.

Example of Chronic Risk factors:

Lack of straw
Competition at feeding

Example of Acute Risk factors:

To fast change of diet
Breakdown of feed system



11

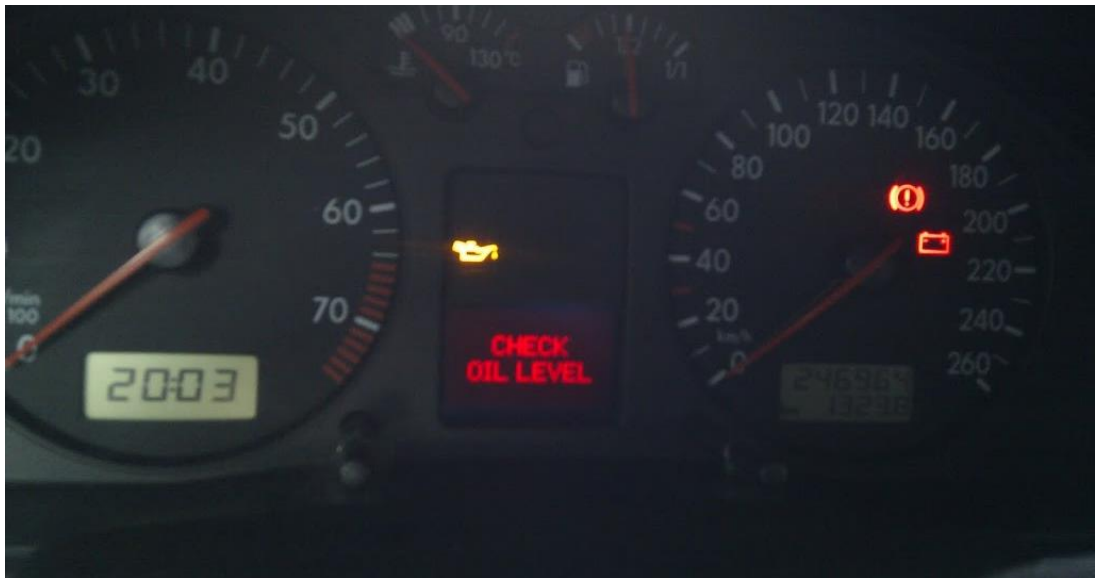
How do we spot early signs of tail biting?

12



Happy pigs have curly tails

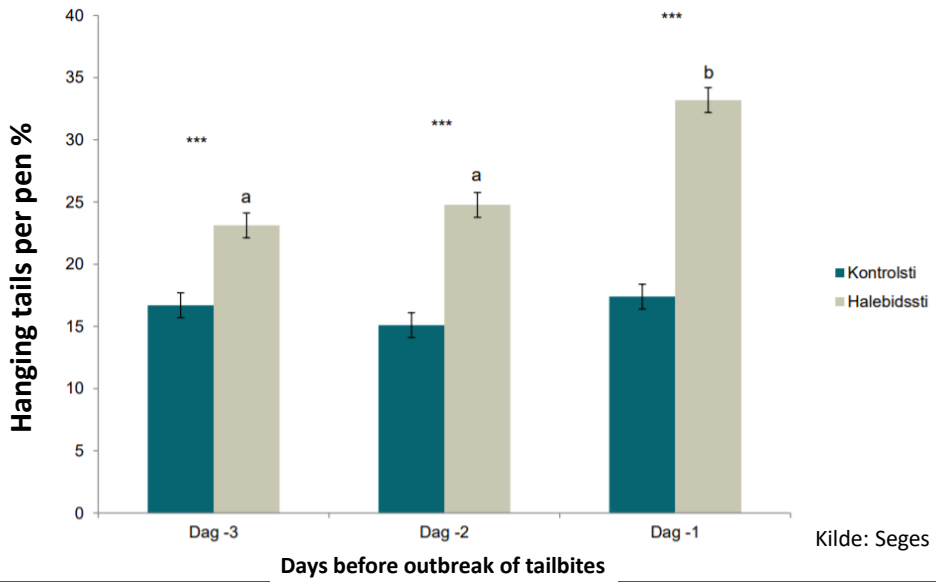
13



14



15



16



17

What triggers hanging tails?

18

What risk factors should we be aware of?

19

In contrast to this:



20

Lying behavior will never become outdated



21



22

PORCUS



23

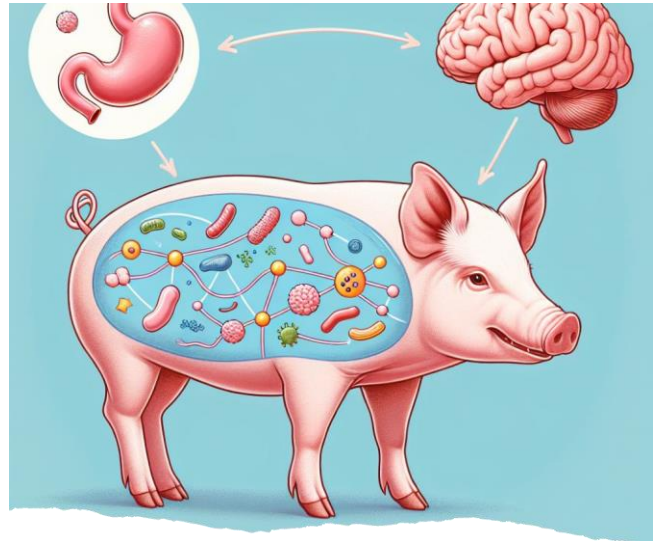
PORCUS



24

Health:

- **Connection between stomach ulcers and tail biting**
 - *Viral diseases, Influenza, PCV2, PRRS*
- **Diarrhea and tail biting**
 - *Weaning diarrhea, Lawsonia*
 - *Too high protein content, mixing errors*
- **Gut microbiome**
 - *You are what you eat*



25

**Without food and drink,
the hero does not work!**



26

Water

Water	Feeding method	
	Dry	Wet
Drinking cup	15-30	15-30
Water nipples	10	15

	Water flow liters per minute
Drinking cup	1
Water nipples – clima pigs	0,6
Water nipples – Slaughter pigs	1

27

Maximum number of pigs per feeder, provided the feeder is placed in the separation between two pens

Number of pigs per feeder with water	Clima pigs (7-30 kg)	Slaughter pigs (30-110 kg)
Meal feed	20 pr side	16 pr side
Pellets	25 pr side	20 pr side

28

Bridging



29

Rooting materials and toys

30

Examples of rooting and enrichment materials

- Licking stones with high magnesium oxide content.
- Binding minerals for cattle.
- Beet pulp or grass pellets on the floor/in the wet feed trough.
- Bite-rite.
- Plastic bucket with stones in.
- Chains.
- Christmas trees, branches.
- Soil or peat.
- Canvas bags.
- Straw racks.
- Apple juice.



31



Bite-rite



Rebspand



Lærreds sæk



Halm



32

Straw- 10 gram



33

Straw- 25 gram

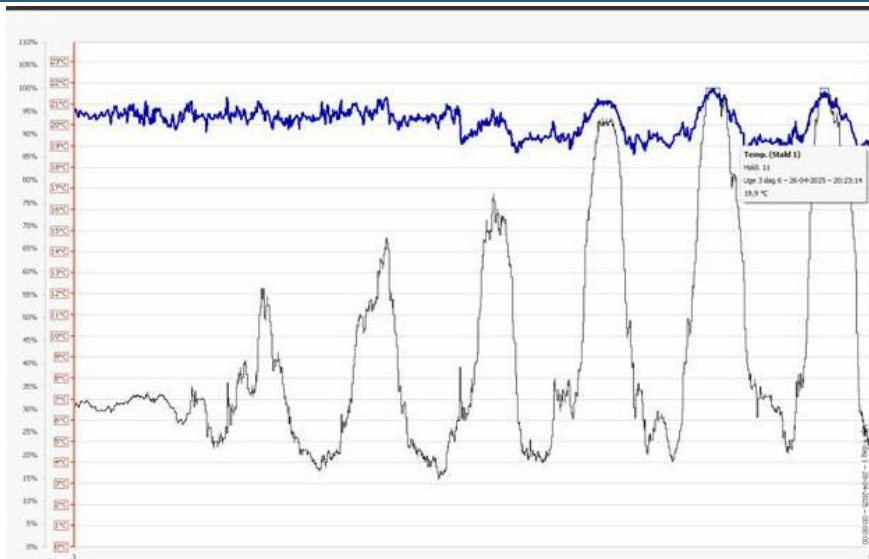


34

Ventilation – what does the ventilation expert say?

- Minimum ventilation (especially with large fluctuations between day and night temperature)
- Trend curves
- Keep an eye on lying behavior

35



36

What should be packed before the inspection round?



37



- Marking spray
- Straw
- Medicine
- Medicine logbook
- Sisal rope, beet pulp, jute sacks
- Apple juice
- Trowel - To remove clogged feed in the feeders
- Rope to hold the pen gate open

38

"Tail bite STOP mix"

- Monocalcium phosphate.
- Feed chalk.
- Magnesium oxide.
- Feed salt.
- Possibly Stalosan F.



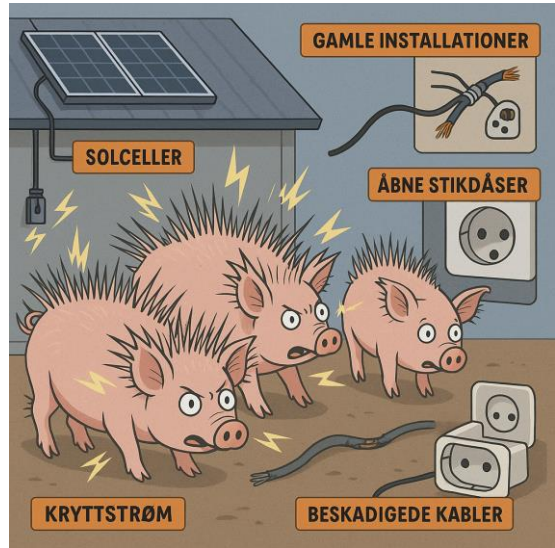
39

**There should be
sickboxes enough—
you will need
them!**



40

There is more
between
heaven and
earth 😊



41



42

Tool to estimation of compensation per pig:

- Svineproduktion.dk:
 - https://svineproduktion.dk/Aktuelt/Temaer/Sammen_om_hele_haler
- Additional expenses can be applied for:
 - Supervision
 - Extra area
 - Improvements of the barn climate
 - Extra feeding and drinking places

43

Værktøj til beregning af kompensation pr. gris

Ansvarsfraskrivelse

Landbrug & Fødevarer Sektor for Gris påtager sig intet ansvar for resultaterne ved anvendelse af dette program.

Landbrug & Fødevarer Sektor for Gris er således ikke ansvarlig for hverken indirekte eller direkte tab som brugere måtte lide ved at disponere på baggrund af tal og beregninger fra programmet.

Sådan gør du

Indtast dine forventede tal i felterne markeret med lysrød og få beregnet din nødvendige kompensation.

Arlig produktion af grise med hele haler, stk.

10.000 stk.

Ekstra opsyn pr. gris

Timeløn for tilsyn, kr.

220,00 kr.

Smågrise, ekstra minutter pr. gris

2,40 min.

Beløb pr. smågris

8,80 kr.

Slagtegrise, ekstra minutter pr. gris

5,50 min.

Beløb pr. slagtegris

20,17 kr.

44

Øget areal i forhold til lovens mindstekrav

Smågrise ift øget areal, %



Forventet dækningsbidrag, kr. pr. smågris (2026)

56

kr./gris

Beløb pr. smågris

5,60 kr.

Slagtegrise ift øget areal, %



Forventet dækningsbidrag, kr. pr. slagtegris (2026)

158

kr./gris

Beløb pr. slagtegris

23,70 kr.

45

Foranstaltninger til forbedring af staldklimaet

Foranstaltninger til forbedring af staldklimaet hos smågrise, i alt kr.

2.500

kr.

Beløb pr. smågris

0,25 kr.

Foranstaltninger til forbedring af staldklimaet hos slagtegrise, i alt kr.

2.700

kr.

Beløb pr. slagtegris

0,27 kr.

46

Investering i ekstra æde- og drikkepladser

Ekstra æde- og drikkepladser samlet investering smågris, kr.

0 kr.

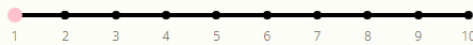
Afskrivningsperiode i forhold til Ekstra æde- og drikkepladser i forhold til smågris, år



Ekstra æde- og drikkepladser samlet investering slagtegris, kr.

0 kr.

Afskrivningsperiode i forhold til Ekstra æde- og drikkepladser i forhold til slagtegris, år



Beløb per smågris

0,00 kr.

Beløb per slagtegris

0,00 kr.

47

Resultater

Totalt beløb i meromkostning pr. smågris

14,65 kr.

Totalt beløb i meromkostning pr. slagtegris

44,14 kr.

Totalt beløb i meromkostning pr. gris (overføres til ansøgning)

58,79 kr.

Totalt beløb i meromkostning i alt

587.866,67 kr.

48

Conclusion

- It's hard work to have pigs with long tails
- A quick effort is crucial
- Long tails costs money
- The basic must be in order
- Have a SOS plan
- Try with a smaller test group first

