

# Get insight - monitoring pigs and data

Veterinarian Christian Christoffersen &  
Production Manager Cecilia Vanggaard

1

## How do we gain insights...

Stay in the barn 24/7/365 or look at the pigs or focus on yours:

Temperature sensors

Weighing Camera, Flow Scale or Weighing Hold

Feeders

Security cameras

Hygiene sensors

Activity Monitors

Climate monitoring systems

Water System Monitoring

Feed management systems



05/14/2025

2

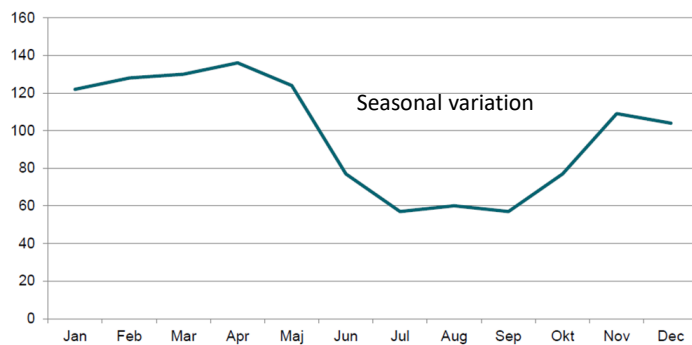
## You all have different starting points



3

### ÅRSTIDSVARIATION

Antal sager



4

# New focus on environment and behaviour



The most integrated barn sensor system in the world  
Live Insights with Images – Every 5 minutes  
Continuous climate monitoring – every minute



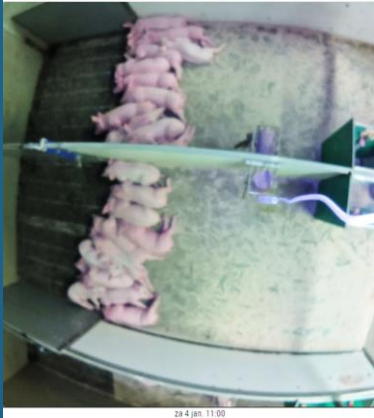
05/44/2025

5



8

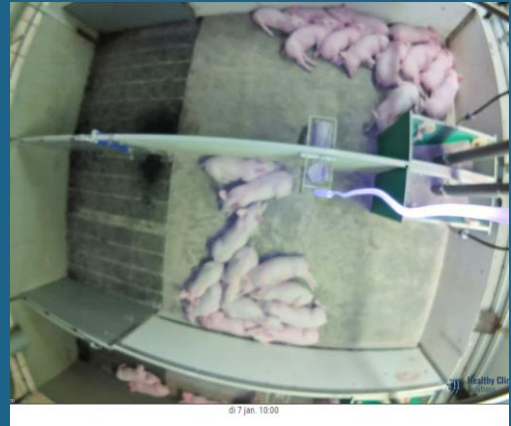
## Case fra Holland



Problems with soiling and ear necrosis



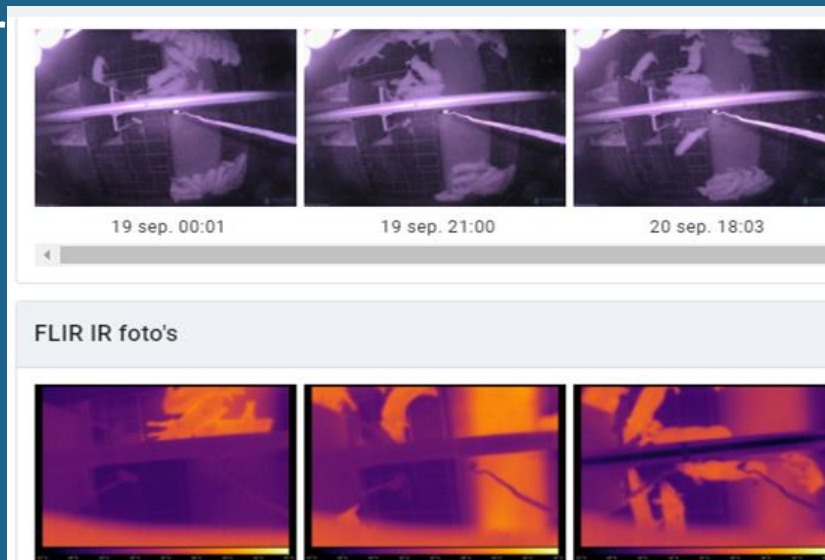
Up in ventilation +  
floorheating lowered  
from 38 to 30 degrees



No soiling and significant reduction in ear necrosis

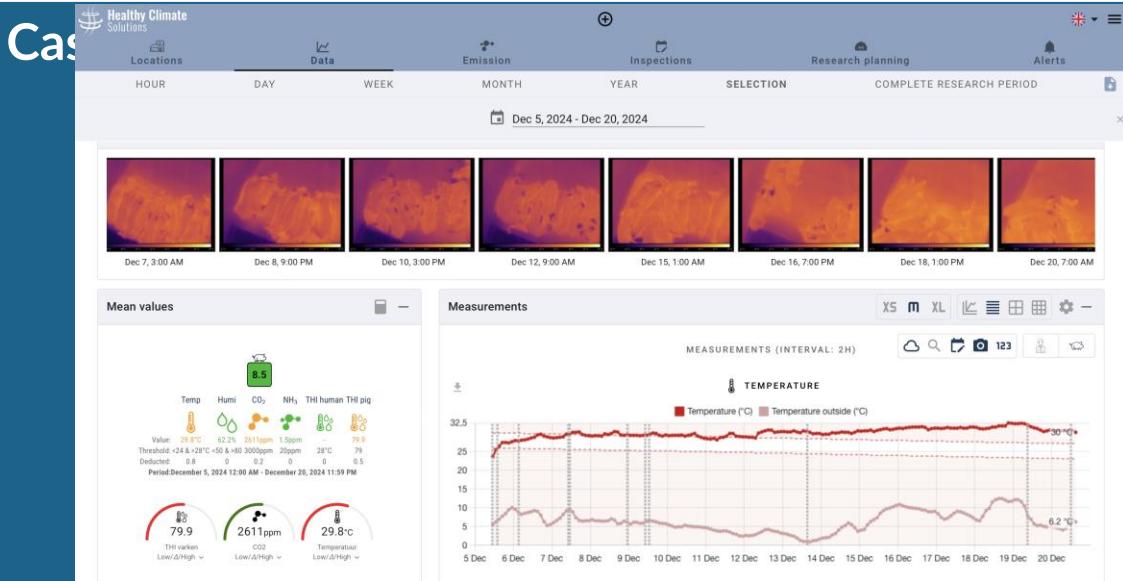
9

## Case fra Denmark ear necrosis



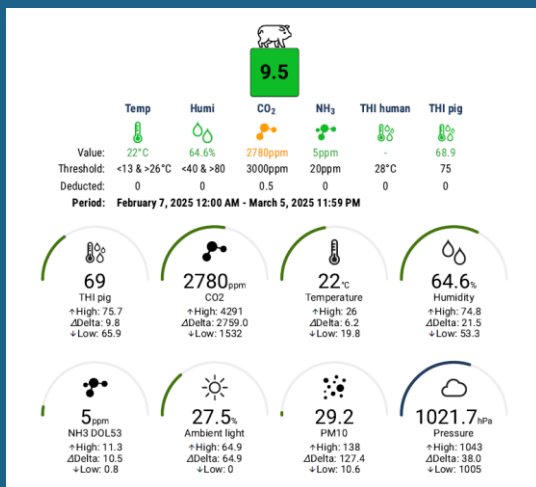
10





11

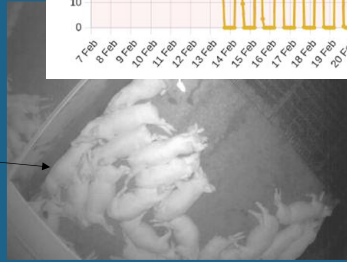
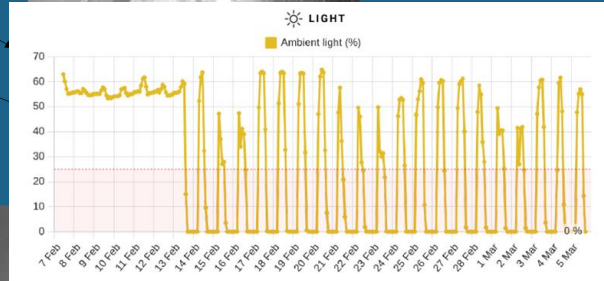
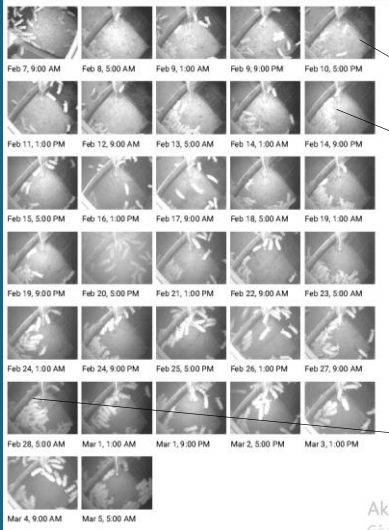
## Case from North Jutland



12

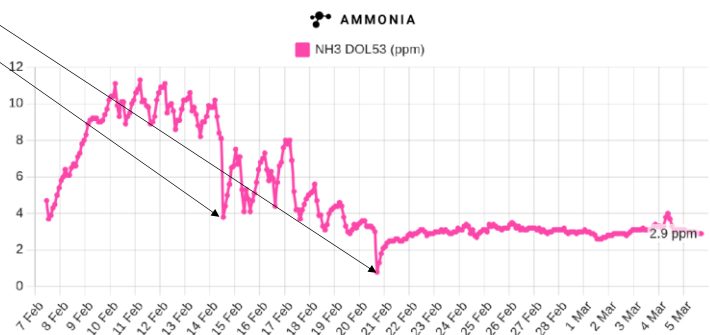
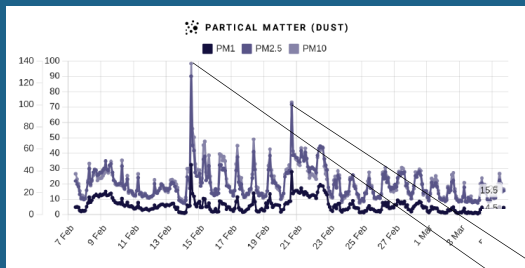
**PORCUS**

Photos - Location 1: Feb 7, 2025 - Mar 5, 2025

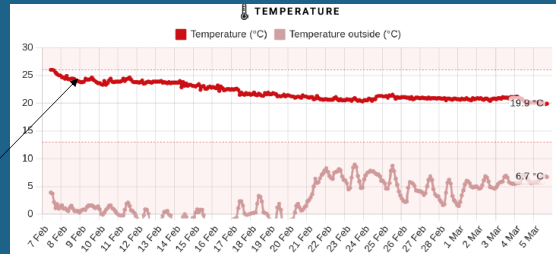
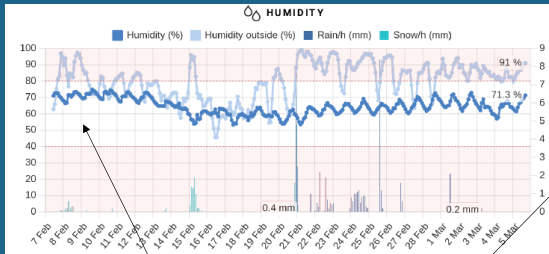


13

**PORCUS**



14

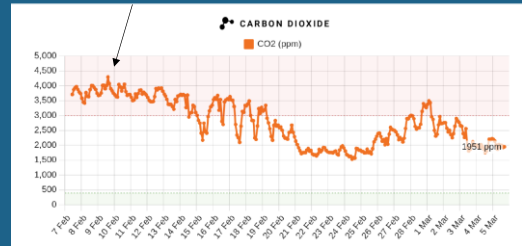


Smågrise, to-klimastald med delvist fast gulv

Dag	1	7	14	21	28	35	42	49	56
Vægt, kg	5,5	6	7	8,5	11	15	18	25	30
Temp. u. overdæk, ° C	31-32	30-31	29-30	28-29	27-28	26-27	25-26	22-23	21-22
Gulv u. overdæk, ° C	32	32	32	32	32	Slukket	Slukket	Slukket	Slukket
Ønsket rumtemp*, ° C	25-26	24	24	23	22	21	20	19	18
Ønsket fugt**, %	60	61	61	62	63	64	70	71	72

\*Rumtemperaturen skal tilpasses, så man får den ønskede temperatur under overdækningen.  
 \*\*Pas på. Jo mindre fugt der kræves, jo mere varme forbruger stalden.

2 m3/dyr (4%) ??



15

## Take home

Environment and behaviour can now be put even more in focus

Weaning start up + first days of fattening

Aggressions e.g. tail biting and ear necrosis

Farrowing

Soiling

Streptococci

Queue at feeders

ETC



05/14/2025

16



**STORE BOUET**  
ET MODERNE LANDBRUG

## Store Bouet

*Cecilia Vanggaard, Production Manager*

- Annual production 105,000 pigs
- 15 employees
- 2 lines

UK  
25.000  
DanBred/Danish genetics

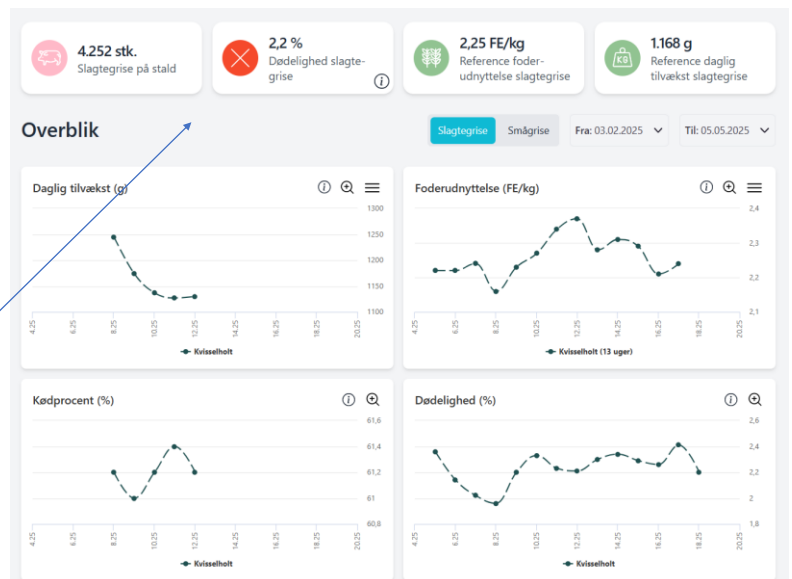
Multi  
80.000  
DanBred

17

## Focus on data

- Daily gain
- Feed consumption
- Mortality
- Delivered within basis

Dynamic KPIs that you choose  
(Key Performance Indicator)

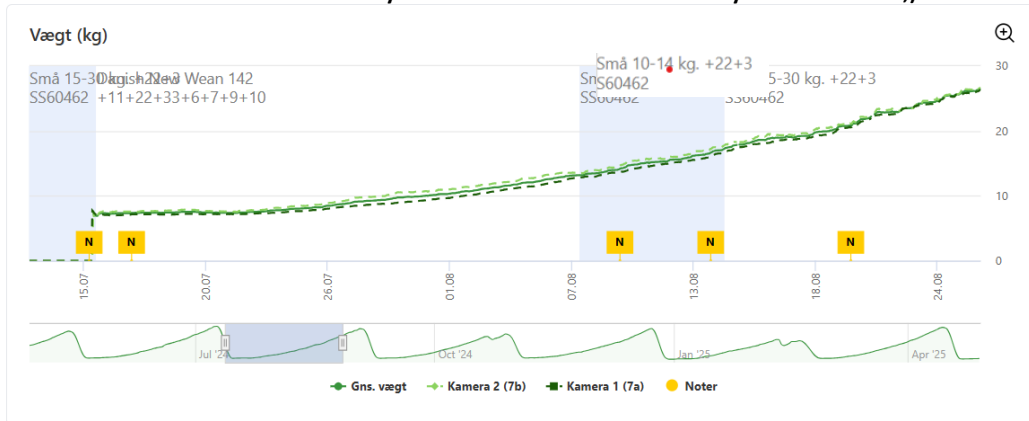


18



Focus on clima start = Growth day 1-8 = total 320 g.

- This is where our journey in the clima started
- The pigs grew too little
- We seem to have tried ALL the food
- Many labour-intensive initiatives - always from the Vet's ;)



19

Focus on the start of the clima

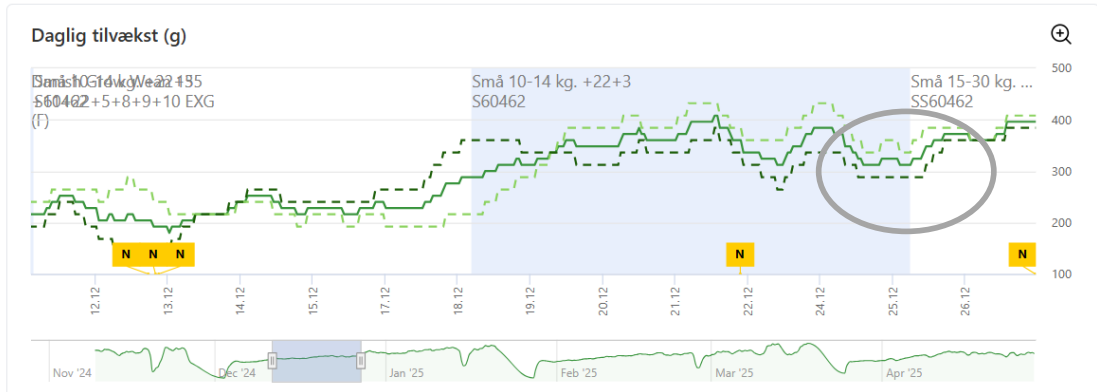
Growth day 1-8 total = 650 grams

- Management and the start is important
- The pigs can now tolerate a little more protein
- The pigs that are moved to the finisherstables are now, more ready



20

## Trends – We optimize feed changes



21

## E-rapport Q3 2023

- **Daily gain**
- **Feed consumption**
- **Mortality**
- **Delivered in basic**


Balance						
Indgange			Afgange			
Total antal	Vægt	Gns. vægt	Antal	Vægt	Gns. vægt	
Status	17.129	1.142.862	66,7	Flyttet	0	0
Købt	0	0		Slagt	18.481	2.099.968
Flyttet	19.860	474.596	23,9	Solgt	0	0
Tilvækst i alt	1.709.725			Død	745	37.250
				Kasserede	67	6.648
				Afviste	0	0
				Status	17.696	1.183.316
<b>Total</b>	<b>36.989</b>	<b>3.327.183</b>	<b>90,0</b>	<b>Total</b>	<b>36.989</b>	<b>3.327.183</b>
Produktion						
	Plan	01.07.23	01.04.23	01.01.23	01.10.22	01.10.22
		30.09.23	30.06.23	31.03.23	31.12.22	30.09.23
Dage i perioden	Dage	92	91	90	92	365
PRODUKTIONSOMFANG						
Prod. grise	Stk	19.065	19.007	19.128	19.595	76.823
Produktionsresultat pr. gris	kr					
Daglig tilvækst	Gr	994	997	963	972	981
Referencetilvækst 30 til 100 kg	Gr	1.011	1.012	990	1.010	1.005
(Faste værdier)						
Reference kødpct. ved 84kg sl. vægt	%	60,0	61,2	62,5	61,9	61,5
FODER						
Foderstyrke/dag	FESv	2,71	2,56	2,49	2,56	2,58
Foderforbrug / prod. gris	FESv	245	221	227	238	233
FESv/kg tilvækst	Energ	2,73	2,57	2,59	2,63	2,63
Reference FESv/kg tilvækst 30-110kg	Energ	2,79	2,64	2,70	2,75	2,72
DIVERSE OPLYSNINGER						
Gns. vægt ved indgang	Kg	23,9	24,8	22,2	20,2	22,8
Tilvækst/prod. gris	Kg	89,7	86,0	87,5	90,6	88,4
Foderdage / prod. gris	Dage	90	86	91	93	90
KLASSIFICERING						
Leverede i basis af i alt	%	90	88	89	88	89
Leverede under basis af i alt	%	4	6	5	7	5
Leverede over basis af i alt	%	6	6	6	5	6
Kødpctent	%	60,1	61,4	62,8	62,1	61,7
Kødpct. galtgrise	%	59,5	60,6	62,1	61,3	60,9
Kødpct. sogrise	%	60,6	62,2	63,6	63,0	62,4

22

New e-rapport

Kjærsgaard Aps  
Sæbyvej 81  
9340 Asaa  
988505061 / 30650421  
CHR. nr.: 104623

Navn: Sl.svin - Samlet  
Lokation: 65, Sl.svin - Samlet  
01-01-25 - 31-03-25  
Samlet - Slagtesvin



Balance					
Indgange			Afgange		
	Total antal	Vægt	Gns. vægt		
Status	19.352	1.235.024	63,8	Flyttet	0
Købt	0	0		Slagtet	19.988
Flyttet	22.141	492.719	22,3	Solgt	550
Tilvækst i alt		1.994.276		Død	653
				Kasserede	62
				Afvisste	0
				Status	20.240
Total	41.493	3.722.019	89,7	Total	41.493

Produktion

Plan

01.01.25

01.10.24

01.07.24

01.04.24

01.04.24

31.03.25

31.12.24

30.09.24

30.06.24

31.03.25

Dage i perioden	Dage	90	92	92	91	365
-----------------	------	----	----	----	----	-----

PRODUKTIONSOMFANG

Prod. grise	Stk	21.237	21.515	20.753	19.251	82.737
Produktionsresultat pr. gris	kr					
Daglig tilvækst	Gr	1.154	1.118	1.097	1.013	1.096
Referencetilvækst 30 til 100 kg (Faste værdier)	Gr	1.183	1.140	1.123	1.027	1.118
Reference kød pct. ved 84kg sl. vægt	%	61,1	60,8	60,3	59,6	60,5

FODER

Foderstyrke/dag	Fbsv	2,49	2,62	2,58	2,61	2,57
Foderforbrug / prod. gris	Fbsv	202	216	221	234	218
Fbsv/kg tilvækst	Eneng	2,15	2,34	2,36	2,58	2,35
Reference Fbsv/kg tilvækst 30-110kg	Eneng	2,21	2,39	2,41	2,62	2,40

DIVERSE OPLYSNINGER

Gns. vægt ved indgang	Kg	22,3	23,4	22,5	24,5	23,1
Total tilvækst	Kg	1.994.276,3	1.989.125,1	1.945.771,8	1.748.521,0	7.677.694,3
Tilvækst/prod. gris	Kg	93,9	92,5	93,8	90,8	92,8
Foderdage / prod. gris	Dage	81	83	85	90	85

KLASSIFICERING

Total antal standard grise	Stk	18.869	20.636	18.296	17.974	75.775
Leverede i basis af i alt	%	94	94	94	95	94
Leverede under basis af i alt	%	3	5	3	4	4
Leverede over basis af i alt	%	2	1	3	2	2
Kadprocent	%	61,0	60,8	60,2	59,6	60,4

23

We have a weighing camera in two finisher stables

Vækstindeks

BAT Mast Rod Premium  
9,7 DK , 6 mm gepr.

BAT Mast Rod 8,9 DK  
gepr.



10. Feb

24. Feb

10. Mar

24. Mar

7. Apr

21. Apr

Indeks

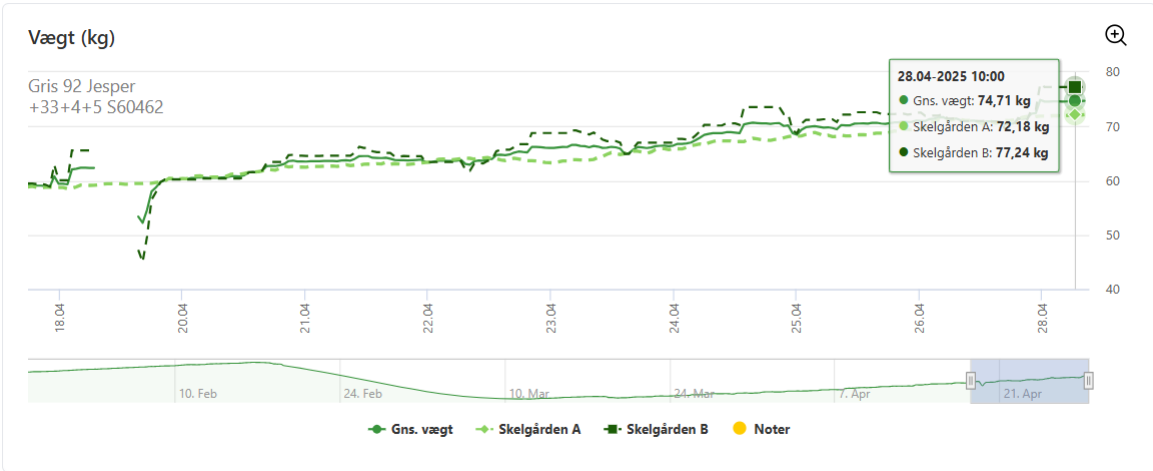
Benchmark

Noter

We optimize based on the trends we see  
We have changed the number of mixtures we use in the slaughter pig houses  
We focus on insertion strategy in relation to sorting

24

11



Here you can see two cameras in a slaughter stable, where we test different levels of protein and lysine

25

## BATS E-rapport in PIGS365

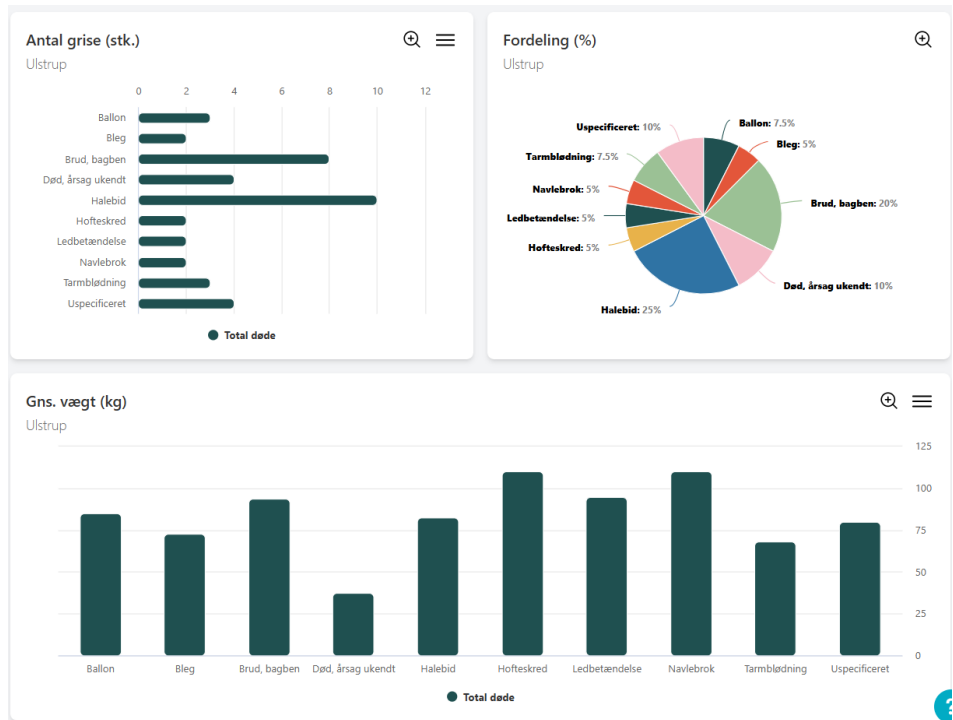
- The cameras show trends
- - BATS e-report, at the end of e.g. trials with a new feed strategy

Balance							
Indgange				Afgange			
	stk.	Vægt	Gns. vægt		stk.	Vægt	Gns. vægt
Status	0	0		Flyttet	0	0	
Indsat / købt	0	0		Slagtet	1.395	159.579	113,9
Flyttet ind	1.444	33.053	22,9	Solgt	0	0	
Tilvækst i alt		130.576		Død	43	3.340	77,7
				Kasseret	6	710	118,3
				Afvist	0	0	
				Status	0	0	
Total	1.444	163.629		Total	1.444	163.629	113,3

Produktionsopgørelse			
	Startdato	02.12.24	02.12.24
	Slutdato	21.02.25	21.02.25
Produktionsomfang			
Dage i perioden	dage	82	82
Producerede grise	stk.	1.427	1.427
Produktionsresultat pr. gris	kr.		
Daglig tilvækst	g	1.152	1.152
Reference daglig tilvækst (30-115 kg)	g	1.187	1.187
Gns. vægt ved indsættelse	kg	22,9	22,9
Gns. produktionsvægt	kg	114,4	114,4
Tilvækst pr. produceret gris	kg	91,5	91,5
Foderdage pr. produceret gris	dage	79,4	79,4

26

## Focus on mortality



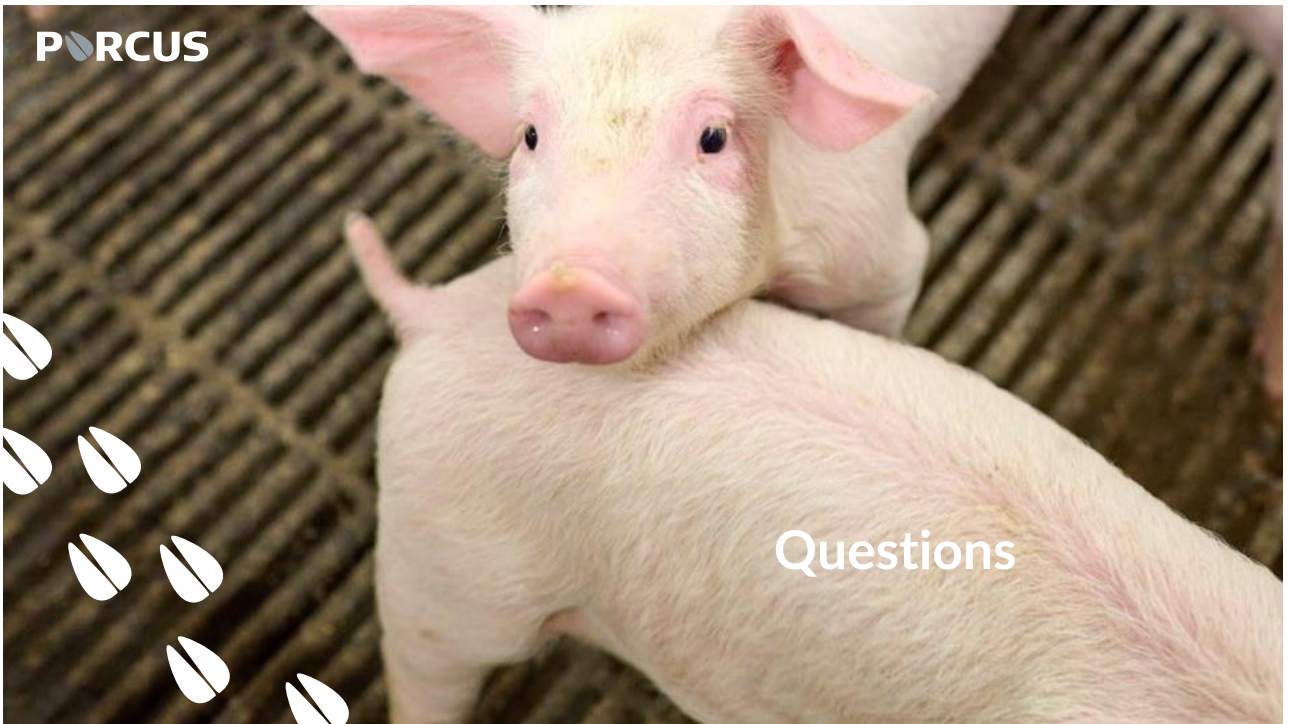
27

## Take home

- Data discipline is crucial
- The cameras show trends, repetitions are necessary
- The cameras can pinpoint where the potential is greatest, but can't solve the problems

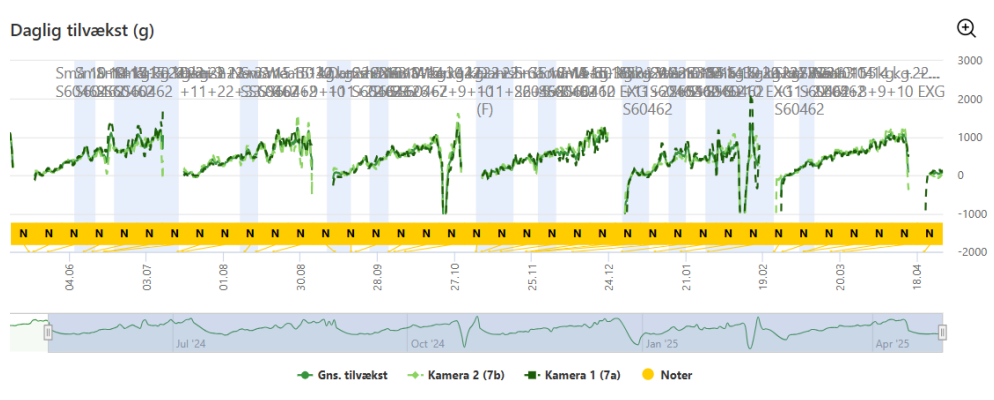
28





29

Graf for vækstindeks i klimastalden de sidste 12 måneder



38