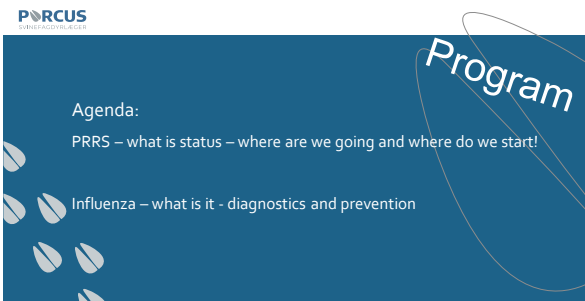




1



2



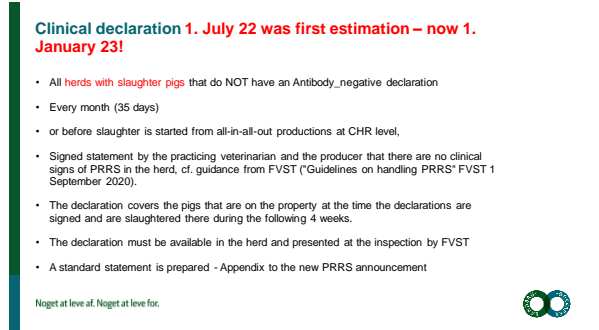
3



4



5



6

**Antibody declaration – Not later than 1. januar 2023**

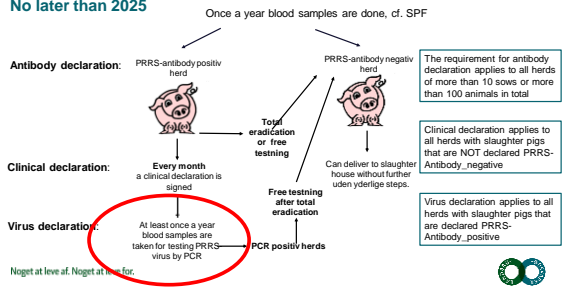
- All herds must have a PRRS antibody declaration
- If an SPF declaration or PRRS declaration already exists for the herd, this will be sufficient for the antibody declaration.
- If a herd has an **unknown PRRS status**, a certain number of blood samples must be taken twice. The number of blood samples depends on the herd type. There must be a gap of one month between the two blood samplings.



SEGES

7

**No later than 2025**



8

**Price differentiation**

- Slaughtering pigs from herds where the PRRS virus has been detected is associated with an additional cost, and the slaughterhouses will individually determine a deduction for this
- New deduction for slaughter pigs from herds with detected PRRS virus (PCR) and which are therefore placed on FVST's official PRRS list
- No new deductions for slaughter sows
- No deduction for fattening pigs that are delivered from antibody\_positive herds

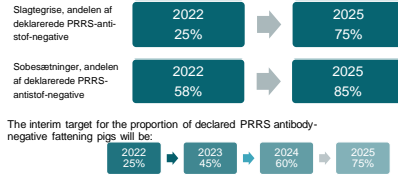


Noget at level af. Noget at level for.

9

**Mål for reduktionsplanen**

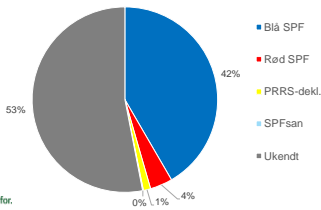
- The overall goal of the strategy for the reduction of porcine reproductive and respiratory syndrome (PRRS) is to increase the proportion of herds free of PRRS over a number of years



10

**Incidence of PRRS in Denmark – December 2021**

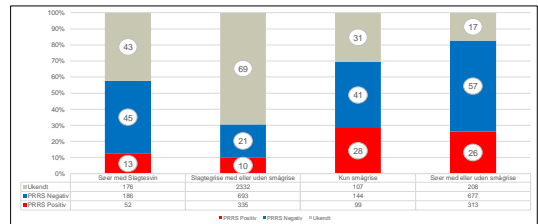
Type	Blå SPF	Rød SPF	PRRS-dekl.	SPFsan	Ukendt	Total
Antal	2216	208	68	7	2825	5324



Noget at level af. Noget at level for.

11

**Types of herds (CHR) - PRRS status**



Noget at level af. Noget at level for.

12

**Regional efforts**

- Herd eradication is combined with area eradication
- Status of all herds - SPF or PRRS declared
- Updated and dynamic maps
- Designate zones for reduction
- No supply of positive pigs to zone
- Involvement of all producers and veterinarians
- Alignment of expectations and goals
- Coordination of regional efforts

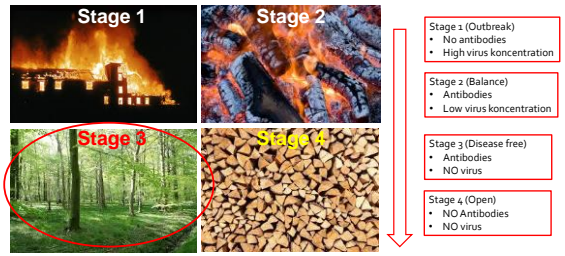


Noget at leve af. Noget at leve for.



13

**PRCUS The 4 PRRS stages in the herd**



14

**PRCUS Sampling**



**Sows**

- 4 x 10 Processing Fluid (PF) for PCR
  - if 4 week batches in a row are green (neg.) the sow team is free
- 10 x Family Oral Fluid (FOF) for PCR
  - if 4 week batches in a row are green (neg.) the weaned pigs are free

15

**PRCUS Sampling**

**Climate section, 30 kg pigs:**

- 10 Blood- and 4 spit tests:
  - Testet in both PCR and ELISA
- 0-testing, 4 spit tests, if piglets are bought from outside, PCR

**Slaughter pigs, app. 60 kg and 110 kg**

- 10 Blood- and 4 spit tests:
  - Testet in both PCR and ELISA



16

**PRCUS Blood- and spit testing profile**

Taking a profile in the positive weaning sections to clarify when the pigs are infected

Samples are taken for each week batch

4 ropes (and 10 blood samples) in each age group

Tested in both PCR and ELISA



17

**PRCUS**

What do we know about influenza virus in pigs?



<https://www.youtube.com/watch?v=NPr-i-lbA7s>

18

PORCUS

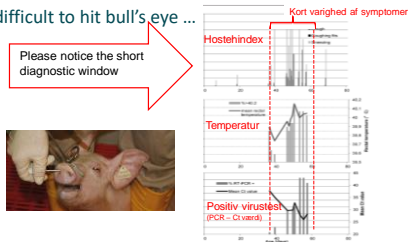
Influenza in pigs is not like in humans, seasonal



19

PORCUS

It can be difficult to hit bull's eye ...



20

PORCUS

Diagnostics



- 5 pools of 5 age groups animals – where there are clinical symptoms
- Is it influenza?
- Which vaccine to use?

21

PORCUS

Symptomer på influenza



22

PORCUS

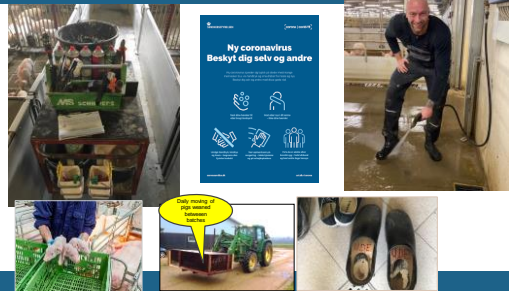
Prevention



23

PORCUS

External and Internal biosecurity / McRebet...



24


PORCUS

Mc Rebel is not a bike club!

PORCUS DELSANERING PRRS

Hvad er Mc Rebel?

- Management
- Challenge
- Reducer
- Exposure
- Biosecurity
- Eradication
- Losses



25

PORCUS

How do you control influenza further – vaccinating against influenza!



26

PORCUS

But what does it cost?

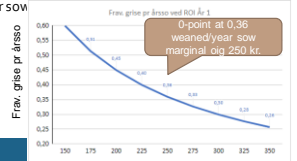


27

PORCUS

0-point at vaccination year 1 (DK)

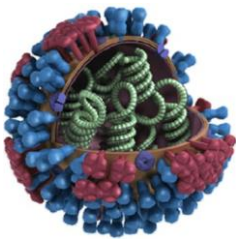
- Year 1: Sows - blitz thereafter maintenance, 1 vac. per quarter + young females (polte) basis vac = 5 vac./year sow
- Year 1: Ca. 90 kr./year sow
- Year 2: Sows maintenance 1 vac. per quarter, young females (polte) basis vac (25% 1st litter = 4,25 vac./year sow
- Year 2: Ca. 76 kr./year sow
- Weaned 1,3 pigs/year sow (S. Gumbert)



28

PORCUS

Influenza – sub types and immunity

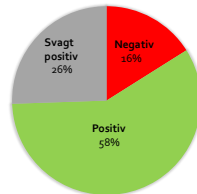


29

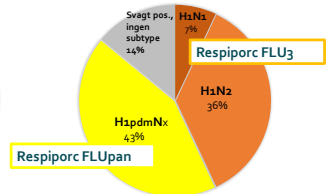
PORCUS

Sub types

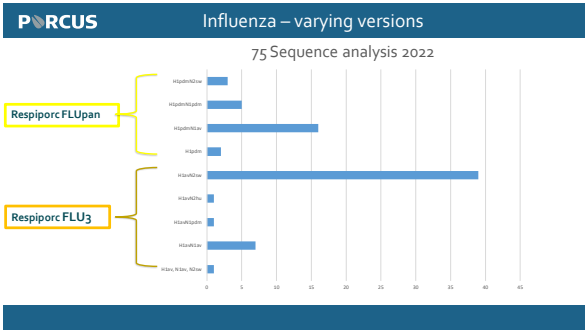
TOTAL 115 – 2022 (JAN-AUG)



DISTRIBUTION OF POSITIVE

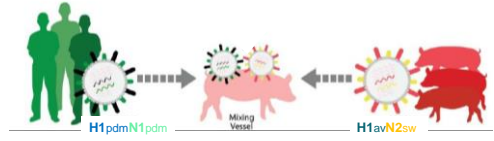


30



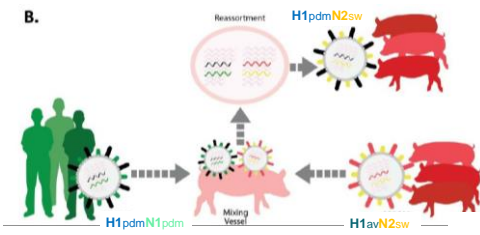
31

New sub types



32

New sub types



33

**PORCUS**

- ✓ Young females (Polte) should be vaccinated against both types of influenza before entering the new section
- ✓ The herd's flu status should be monitored continuously, by clinical symptoms
- ✓ For influenza subtype combined between pandemic and classic, both vaccines should be used for 100% effect

34

**PORCUS** Influenza is a zoonosis

EVERYBODY who goes into pig stables should be vaccinated against influenza

35