

Mini wet feed system Holmskovgård

Lars Andersen



1

2



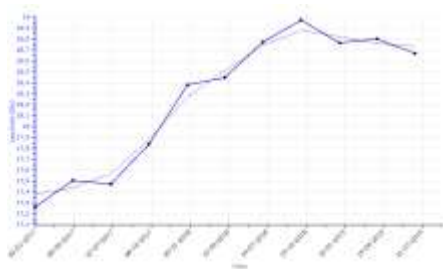
3

Why this system?

4

LMQ

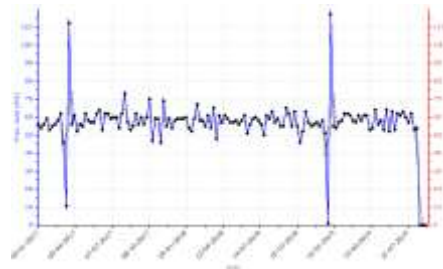
Liveborn



5

LMQ

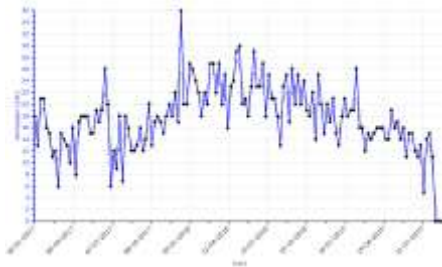
Weaned teams per week



6

LMO

Number of nursing sows/week – in total around 60 weanings/week



7

3 tanks



8

Hot water / milk powder



9

The system



10

The normal situation – pigs eat from both sow and system



11

A sow that doesn't milk enough



12

Daily cleaning



13

Amount of feed / milk

Amount /day	14	15	16	17	18	19	20	21	22	40
Milk%	100	90	80	70	60	50	40	30	15	
Feed %		10	20	30	40	50	60	70	85	

14

This is added to the feed (20 %)



15

Test of many types of milk have been tested



16

Silo to the feed



17

Questions 😊

18